



Partnership Review

John Shaw Head of BCP



Programme

- Services provided
- Building Control Performance
- Finance
- Dame Judith Hackett independent review of Building Regulations and Fire safety.
- Benefits and achievements
- LATC/Current focus



The Building Control Partnership

- Provides all Building Control services on behalf of **Fareham** Borough Council, **Gosport** Borough Council and **Portsmouth** City Council and under contract to HCC
- Originally formed October 2002- expanded in May 2015 to include Portsmouth
- Based on open ended legal agreement
- 21 staff-on a variety of contracts
- Operate out of Depot offices+ FBC/GBC/PCC/Home
- Single IT system (Ocella), Single QA registration, single budget

What services do we provide?

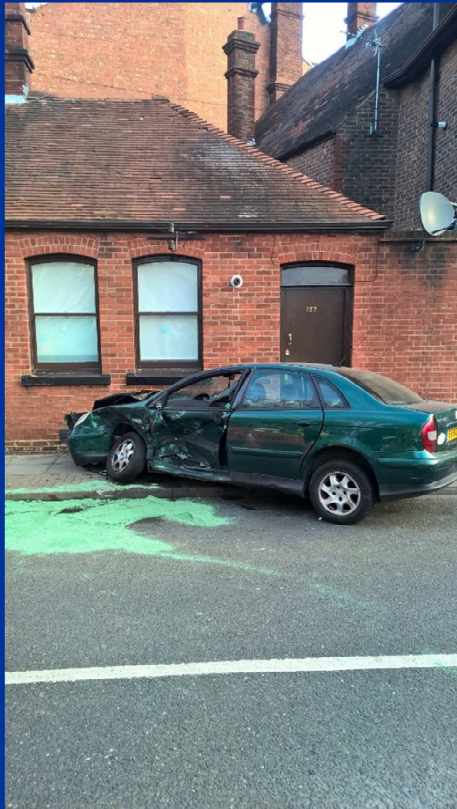
- **Building Regulation-** a statutory chargeable service in competition...Full plans and Building notice application...approval and site inspection... ***Around 70% of total workload-3370 (+4.7%) applications over 16000 inspections pa (+23%)***

Building Regulations... 16 Parts from A to Q

- Enforcement service-*106 investigations*
- Regularisation service -*126 applications*
- Approved inspector service- *839 Notices received(+2.75%)*
- Approved installer applications / notifications- *21444*
- Building Regulation reversion service -*12 applications*
- 24 hour Dangerous structure service – *122 incidents*

Services provided

- 24 hour Dangerous structure service



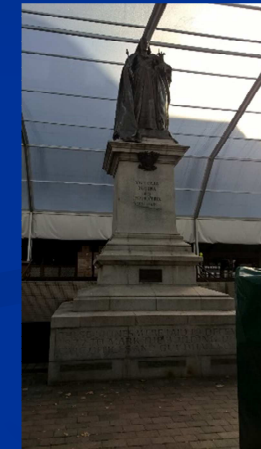


BCP Services

- Demolition service – *47 applications*
- Property address service- *82 applications*
- Building Regulation Charge exempt service -*39 applications*
- Construction and Party wall act advice and land charge service
- Planning Development Control, Environmental Health and other internal services
- Access officer
- SAG for events, Safety at Sports Grounds, Emergency planning

BCP Services

- SAG for events, Safety at Sports Grounds, Emergency planning



BCP Finance

- BCP must be self financing for chargeable activities
- BCP sets and publish its own charges-fixed charges for small scale building work, individual assessments for larger scale work-in full competition with Approved Inspectors
- Charges must be set to recover costs/planned investment only-BCP business reserve/not for profit
- CIPFA/DCLG guidance on how charges should be set and how surpluses can be used.
- GBC , FBC, PCC have SLA's budgets with BCP to pay for non-chargeable work, 70/30 split
i.e. Enforcement, Dangerous structure service
- £1.4 Million budget, monthly reports/monitoring

Hackett interim report- Regulation of high rise residential

- Final report likely in spring 2018
- Not specific to Grenfell issues-looking to create better, consistent system, clearer definition of roles and responsibilities, improved regulatory framework.
- Systemic failure allow short cuts
- Building Regulations not fit for purpose-too complex, unclear
- Inadequate competencies, testing and quality assurance
- Enforcement- need for stronger activity and golden thread of responsibility



Benefits and Achievements

- Continued integration of Portsmouth into the Partnership
- In 2017, became preferred Building Control Partner to four more companies
- Renewed Building Control contract with Hampshire County Council for all their building projects
- BS ISO 9001 Quality management system registered and independently audited by BSI

Benefits and Achievements

- Financially successful, with no charge increase since 2011-lowest charges in Hampshire
- Annual surpluses to date(just under £80K 2016-17) business reserve and annual investment plan.
- Excellent inter-authority working relationships-easy transition into PCC/GBC joint management



Benefits and Achievements

- Continued e-service delivery and performance improvements achieved
- Improved technical and process consistency for customers
- Better resilience to cope-holidays, sickness, peaks and troughs, new responsibilities e.g. Post Grenfell inspections of high rise.



Benefits and Achievements

- Marketing success-Over 45 partners-Large housing, commercial, small architects and surveyors, major contract for all Hampshire County Council BC work
- Excellent client feedback, ratings, references
- Closer internal linkages with DC and EH

Current Focus

- Staffing recruitment/retention strategy
- Vanguard intervention
- ISO update to 2015 standard
- Development of Business case for formation of a LATC- to enhance ability to trade, streamline the existing BCP systems and to provide flexible, competitive and consistent employment packages to recruit and retain staff
- Report and finalised Business Case to BCP management Panel and Executive for decision



Any questions?